

Strengthen our community. Create the environment. Develop their potential. Strengthen our community. Create the environment. Develop their potential. Strengthen our community. Create the environment. Develop their potential. Strengthen our community. Create the environment. Develop their potential.

Driven
TO MAKE A
DIFFERENCE

Strategic Plan
OUR NEXT DECADE



SOUTHRIDGE.
We are all one.
604.535.5056
southridge.bc.ca
2656 160th Street
Surrey, BC V3Z 0B7



SOUTHRIDGE.
We are all one.



Southridge School was founded to make a difference. It's that simple.

Southridge is a school where students not only receive an outstanding education, but where they flourish as individuals, discover their passion and purpose, and develop the integrity, confidence and character to make the world a better place.

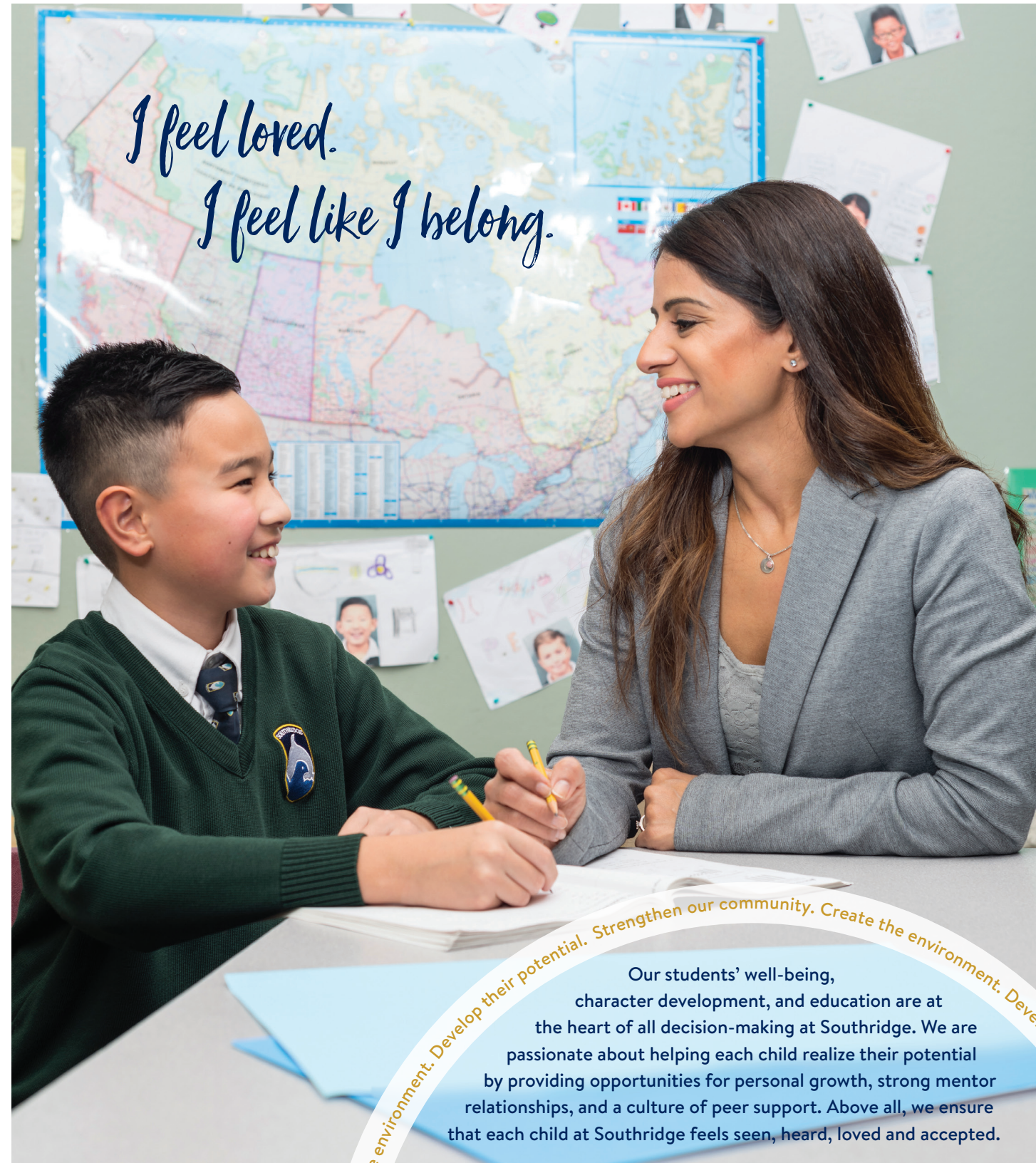
All our graduates are prepared academically to pursue post-secondary education. But more than that, they go on to become compassionate leaders, dedicated volunteers, and caring individuals who make a difference in their families, workplaces, communities, and on the world stage.

The question for the Southridge community today is, how do we ensure that we continue to graduate students who can make a difference in a changing world? What skills, tools, and facilities do our students, faculty, and staff need to thrive?

As a school, we are able to answer these questions from an enviable position of strength. We have built a solid foundation of academic excellence, fiscal stability, strong governance, and a committed community. Now it is time to refine our focus, to act strategically in ways that are both forward-thinking and student-centred, without ever losing sight of the things that make us strong.

THE OVERALL GOALS OF OUR STRATEGIC PLAN, DRIVEN TO MAKE A DIFFERENCE, ARE TO:

EQUIP EACH STUDENT FOR THEIR PATH AHEAD	DEVELOP A CREATIVE AND SUPPORTIVE ENVIRONMENT FOR LEARNING AND WORK	EMBRACE AND ENGAGE OUR DIVERSE COMMUNITY
---	---	--



*I feel loved.
I feel like I belong.*

Our students' well-being, character development, and education are at the heart of all decision-making at Southridge. We are passionate about helping each child realize their potential by providing opportunities for personal growth, strong mentor relationships, and a culture of peer support. Above all, we ensure that each child at Southridge feels seen, heard, loved and accepted.

Our students face a fast-changing future. No one knows with certainty what jobs and opportunities will exist when our future kindergarten classes graduate.

Our job is to


**EQUIP EACH STUDENT
FOR THEIR PATH AHEAD,**

to ensure they have the knowledge, skills, and character to thrive and make a difference in the 21st century.

To succeed in a changing environment, students need resilience, confidence, creativity, and the ability to adapt – along with a broad base of knowledge. We believe that these skills and qualities develop best when children know who they are, understand others, and feel like they belong.

Going forward, we will develop more programs for student wellness and personal development. We will continue to harness the power of mentorship and wholehearted support, ensuring that each child has trusted adults in the school to whom they can reach out, and who believe in them. We will actively support our students in school activities beyond the classroom, and build more social spaces in our buildings where students can connect.

We will ensure that our students receive the well-rounded education and skills that they need, expanding our course offerings, the use of technology, lab and maker spaces, and future-forward teaching methods.



When a light bulb illuminates, it shines on everyone. That's why we believe it's important to create an environment where ideas, passions, and connections can flourish. Where learning and teaching happen everywhere, personal well-being is valued, and the space to explore, discover, and connect is available to all.

1. Create the environment. Develop their potential. Strengthen our community. Create

*I feel supported.
I can explore and take risks.*

When engaged students and inspired teachers come together in a creative, supportive environment, that's when the magic happens.

One teacher can change a child's life, and the right environment can provide the space and resources to help it happen. Our task is to

**DEVELOP A CREATIVE AND
SUPPORTIVE ENVIRONMENT FOR
LEARNING AND WORK,**

one that fosters collaboration, connection, growth, and wellness.

Our teachers are our students' guides and mentors. We rely on them to engage, inform, and inspire young minds. Across our Kindergarten to Grade 12 curriculum, we are driven to foster collaboration, creativity and inquiry among our students. As a result of our forward-thinking approaches and philosophies, our teachers are on the leading edge of education, teaching our students how to think, not what to think.

Going forward, we will continue to attract, retain, and develop outstanding faculty and staff. We will expand our support for their well-being and professional development, and provide students and teachers with the resources they need to successfully teach and learn.

Our Campus Master Plan explains how we will expand and renovate our facilities to create new spaces for work, school life, and community connection including: flexible spaces for collaboration and other activities, student lounges, a new dining area, fitness facilities, and an administration building with performance space.



We believe that a strong character is just as important as a strong mind. Our graduates are resilient problem-solvers, compassionate leaders, and caring individuals who contribute to the community around them. These are the qualities that we know will make a difference in their lives and in the lives of others – whatever path they choose.

Our community is our strength.
Whether we are students, faculty, staff, family, or alumni, we are united by shared values of truth, tolerance, compassion and respect.

To so many people Southridge feels like home. For us, that sense of belonging is a sign of our success, and to strengthen that feeling and help it grow we will

**EMBRACE AND ENGAGE
OUR DIVERSE COMMUNITY**

even more in the years ahead.

Because we know that when a community is driven to make a difference, we can accomplish extraordinary things.

Going forward, we will nurture and strengthen our network of support within the school and outside it. We will enhance our relationships across Kindergarten to Grade 12: students, faculty and staff. We will ensure that our parents have meaningful opportunities to get involved in the school, and we will develop transition programs for incoming families. Our alumni will be provided with more opportunities to connect with students and engage with the school in meaningful ways – and we will continue to foster purposeful relationships with local organizations.

Building on our success.

Southridge has accomplished so much on so many levels: we have been recognized as a leader in academic excellence - graduating students who are ready to pursue their chosen post-secondary pursuits; our community is strong and committed; and we are governed by a Board that is fiscally prudent, forward-thinking, and proactive. After 25 years of hard work, reflection and determined action, our school is in a fortunate position.

The time has come, then, to push forward in a new direction. We will use our solid foundation as the stepping-off point that will allow us to take our mission – educating people who make a difference – to the next level. It is time to refine our strategic decision-making so that it focuses even more specifically on our students.

Going forward, we will strengthen our focus on teaching the essential competencies and attitudes that will have an enormous impact on the lives of our students, and we will provide the facilities and resources to support the growth of these skills and dispositions. To help them achieve success in the future, our students will learn how to think critically and creatively, to collaborate and to understand the interdependence of people with one another; they will achieve technological proficiency, digital literacy and the ability to communicate effectively.

Woven throughout it all, we need the help and support of our community.

At Southridge, we share a common goal: raising committed, wholesome people who will realize their potential and contribute to the greater good. Our strategic plan, **Driven to Make a Difference**, shows us the way forward.

D. Stephens.

Drew Stephens,
Head of School

Driven to Make a Difference

Since 1995, Southridge has built a solid foundation of academic excellence, fiscal stability, strong governance, and a committed community. Over the next decade, this strategic plan will drive our mission even further forward while also maintaining the things that make us strong.

EQUIP EACH STUDENT FOR THEIR PATH AHEAD

GOAL #1

Ensure our students develop a strong sense of belonging and well-being

- Authentically know and actively support all of our students
- Further enhance our support for student wellness including social-emotional health

GOAL #2

Enable our students to better know themselves

- Develop an environment that promotes enhanced self-knowledge and self-advocacy
- Broaden program opportunities to further enable a well-rounded, forward thinking approach to education
- Actively support student involvement in school activities beyond the classroom

GOAL #3

Equip our students with the resilience and skills needed to thrive in, and contribute to, our changing world

- Ensure students use technology as a tool creatively and responsibly
- Support the development of skills that prepare students for life transitions
- Explore and implement new ways to develop globally minded and active citizens

DEVELOP A CREATIVE AND SUPPORTIVE ENVIRONMENT FOR LEARNING AND WORK

GOAL #1

Attract, retain and develop outstanding faculty, staff and leadership

- Foster and support a culture of wellness for all employees
- Continue our commitment to competitive compensation and benefits
- Provide strategic and targeted professional development

GOAL #2

Develop enhanced facilities for student learning and our community's interaction

- Increase and renovate our facilities to support forward thinking approaches to education, student life programs and a connected community
- Incorporate an improved food services program into our facilities planning

EMBRACE AND ENGAGE OUR DIVERSE COMMUNITY

GOAL #1

Build strong ties across our Southridge community

- Enhance relationships across Kindergarten to Grade 12 faculty, staff and students
- Strengthen the family/school partnership
- Refine and celebrate our external community partnerships
- Engage alumni with Southridge in meaningful ways
- Celebrate our 25th Anniversary with a view to positioning Southridge for the future

Strategic Plan OUR NEXT DECADE



SOUTHRIDGE.
We are all one.

community. Create the environment. Develop their potential. Strengthen our community. Create the